



Monthly Ridership Report - April

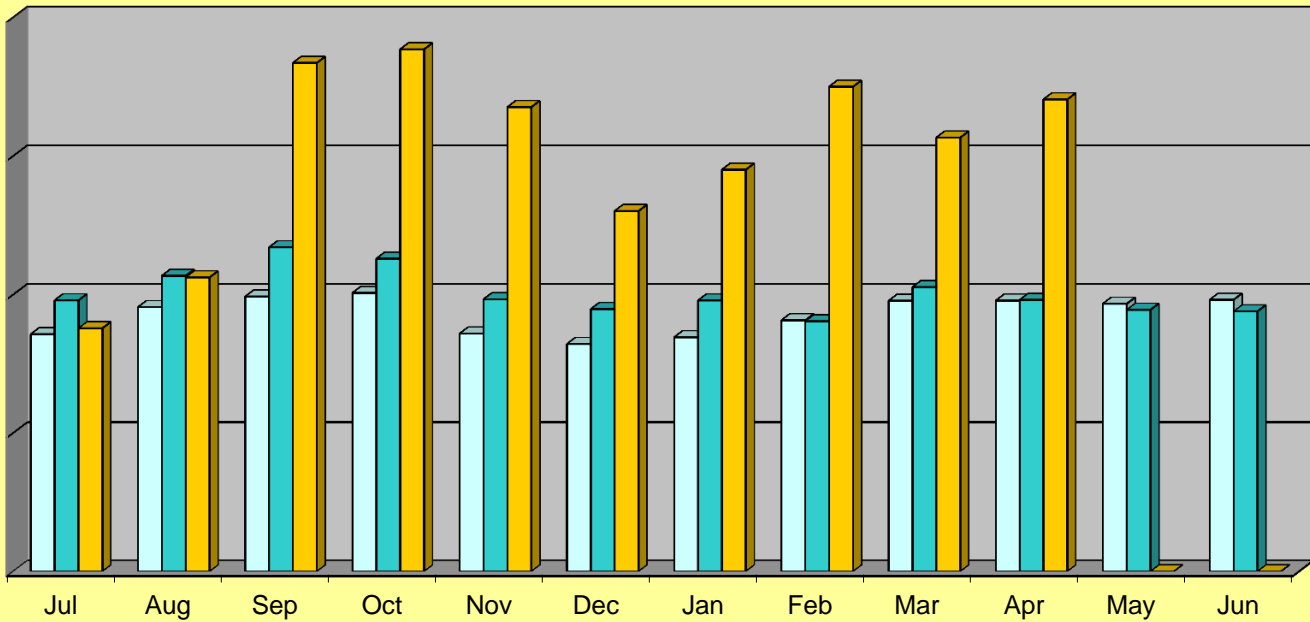


Ridership Comparison by Month FY10 to FY12

| | Jul | Aug | Sep | Oct | Nov | Dec | Jan | Feb | Mar | Apr | May | Jun |
|-------|--------|---------|---------|---------|---------|---------|---------|---------|---------|---------|--------|--------|
| FY 10 | 85,707 | 95,496 | 99,328 | 100,638 | 85,948 | 82,183 | 84,611 | 90,763 | 97,804 | 97,883 | 96,717 | 98,176 |
| FY 11 | 97,957 | 106,823 | 117,082 | 112,980 | 98,348 | 94,809 | 97,920 | 90,381 | 102,725 | 98,104 | 94,532 | 93,968 |
| FY 12 | 87,854 | 106,249 | 183,606 | 188,499 | 167,666 | 130,168 | 145,085 | 175,022 | 156,672 | 170,438 | 0 | 0 |

* August 29, 2011, Mountain Link srvc launched

□ FY 10 ■ FY 11 ■ FY 12



Riders Per Hour

