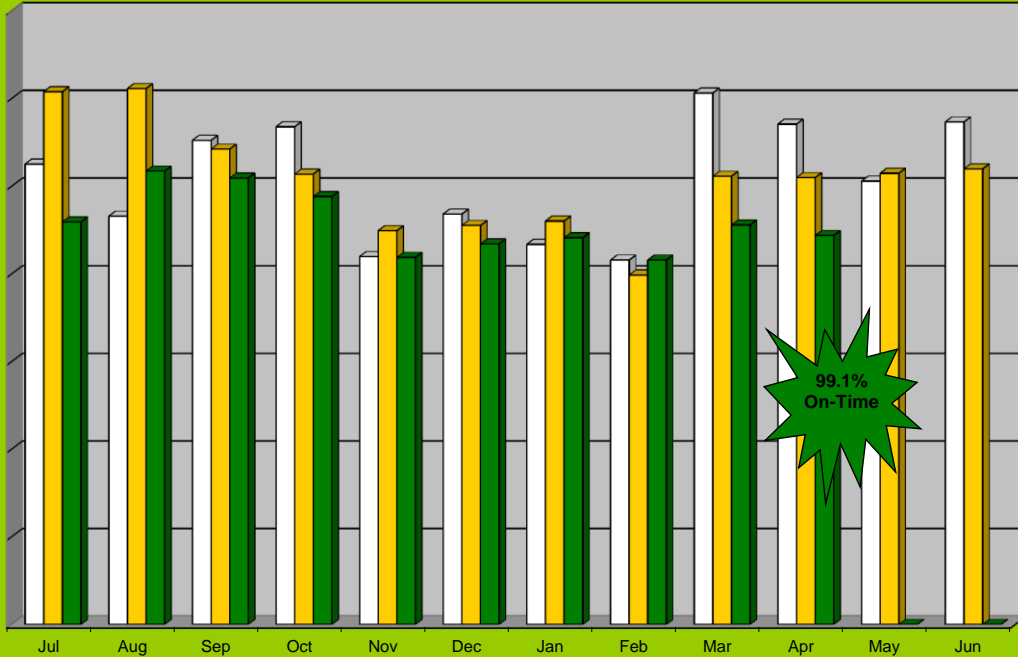


Demand Response Ridership Trends - April



Ridership Comparison by Month
FY10 to FY12

	Jul	Aug	Sep	Oct	Nov	Dec	Jan	Feb	Mar	Apr	May	Jun
FY10	1,051	932	1,105	1,136	840	937	868	832	1,213	1,142	1,012	1,147
FY 11	1,216	1,223	1,085	1,028	899	911	921	798	1,023	1,020	1,030	1,040
FY 12	919	1,035	1,019	977	838	869	883	832	912	888	0	0



Monthly Passengers Per Hour

