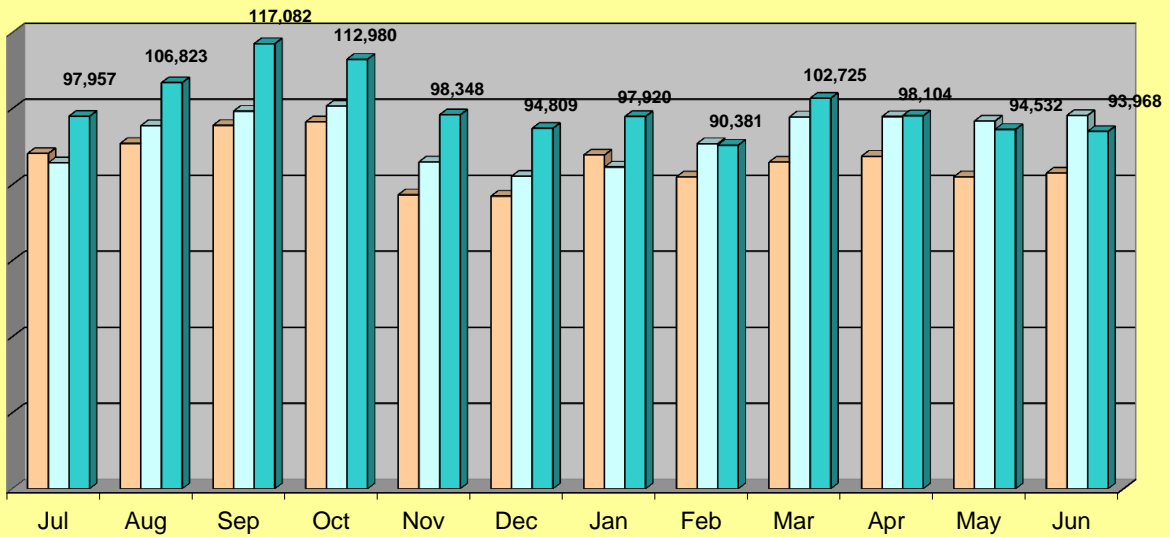




Monthly Passenger Total - June

Ridership Comparison by Month
FY09 to FY11

	Jul	Aug	Sep	Oct	Nov	Dec	Jan	Feb	Mar	Apr	May	Jun
FY 09	88,180	90,828	95,592	96,481	77,324	76,947	87,761	82,007	85,900	87,447	82,033	83,000
FY 10	85,707	95,496	99,328	100,638	85,948	82,183	84,611	90,763	97,804	97,883	96,717	98,176
FY 11	97,957	106,823	117,082	112,980	98,348	94,809	97,920	90,381	102,725	98,104	94,532	93,968



Riders Per Hour

