



FY2012 July - August Performance Report



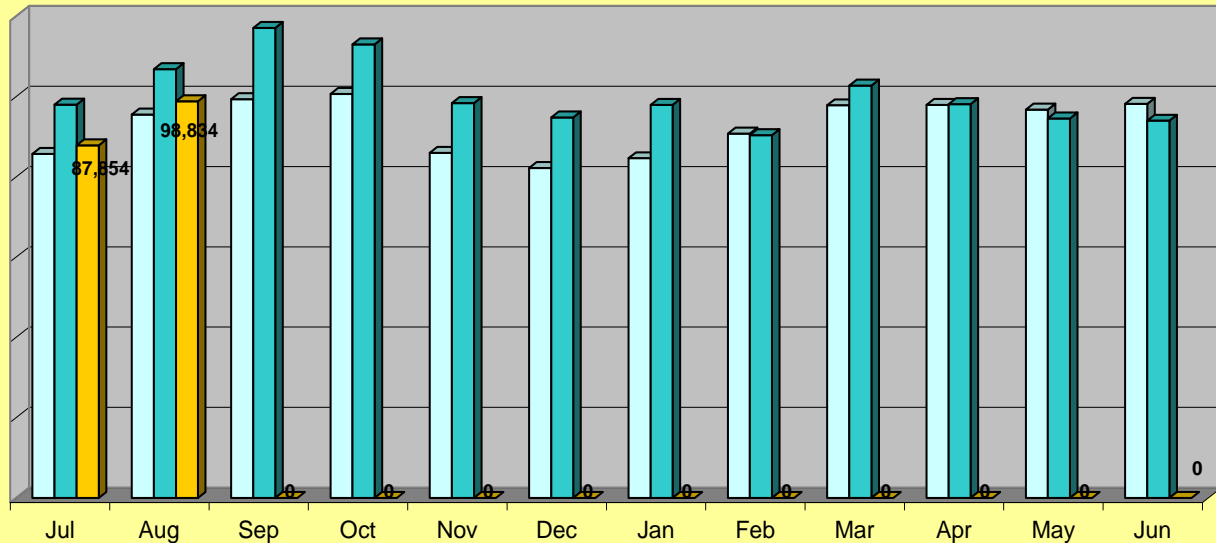
Getting you where you want to go



Monthly Passenger Total - August

Ridership Comparison by Month FY09 to FY12

	Jul	Aug	Sep	Oct	Nov	Dec	Jan	Feb	Mar	Apr	May	Jun
FY 10	85,707	95,496	99,328	100,638	85,948	82,183	84,611	90,763	97,804	97,883	96,717	98,176
FY 11	97,957	106,823	117,082	112,980	98,348	94,809	97,920	90,381	102,725	98,104	94,532	93,968
FY 12	87,854	98,834	0	0	0	0	0	0	0	0	0	0

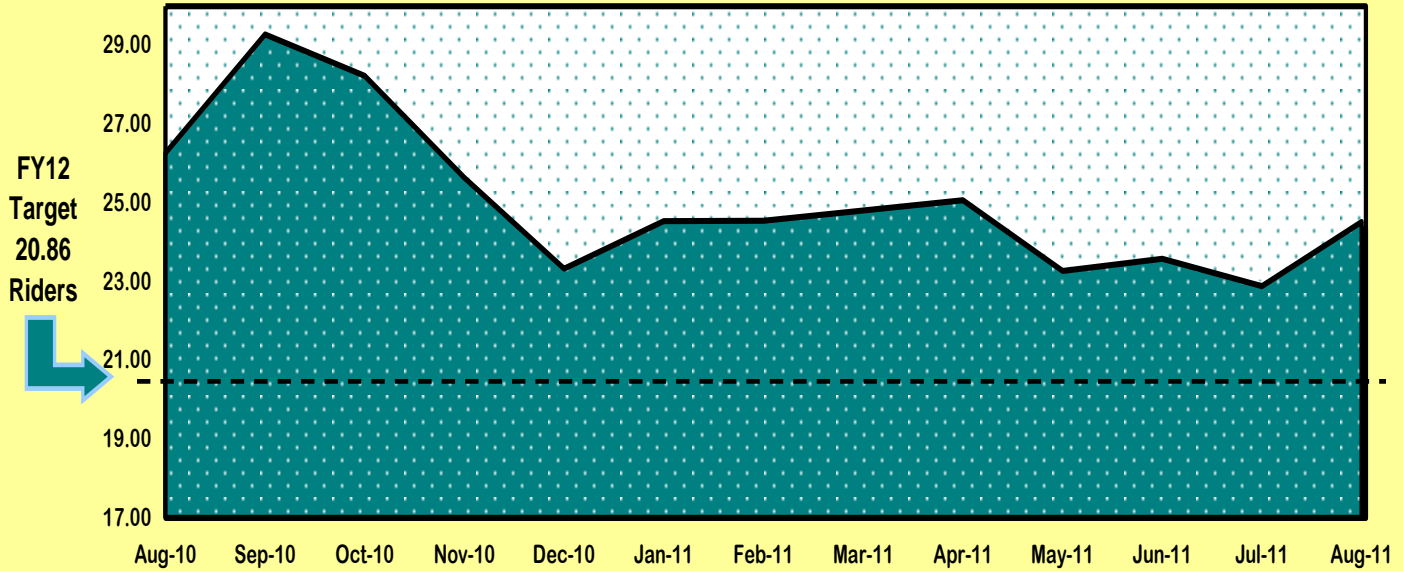


Getting you where you want to go



Monthly Passenger Total - August

Riders Per Hour

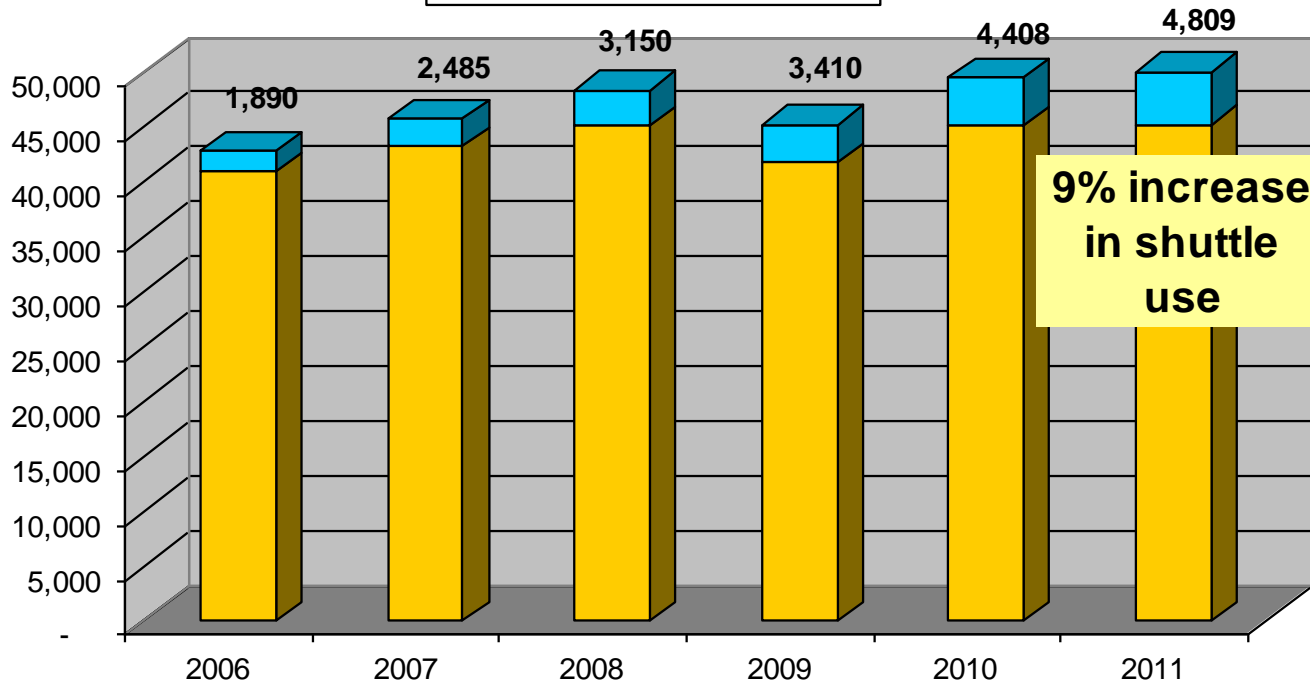


Getting you where you want to go



Coconino County Fair Shuttle

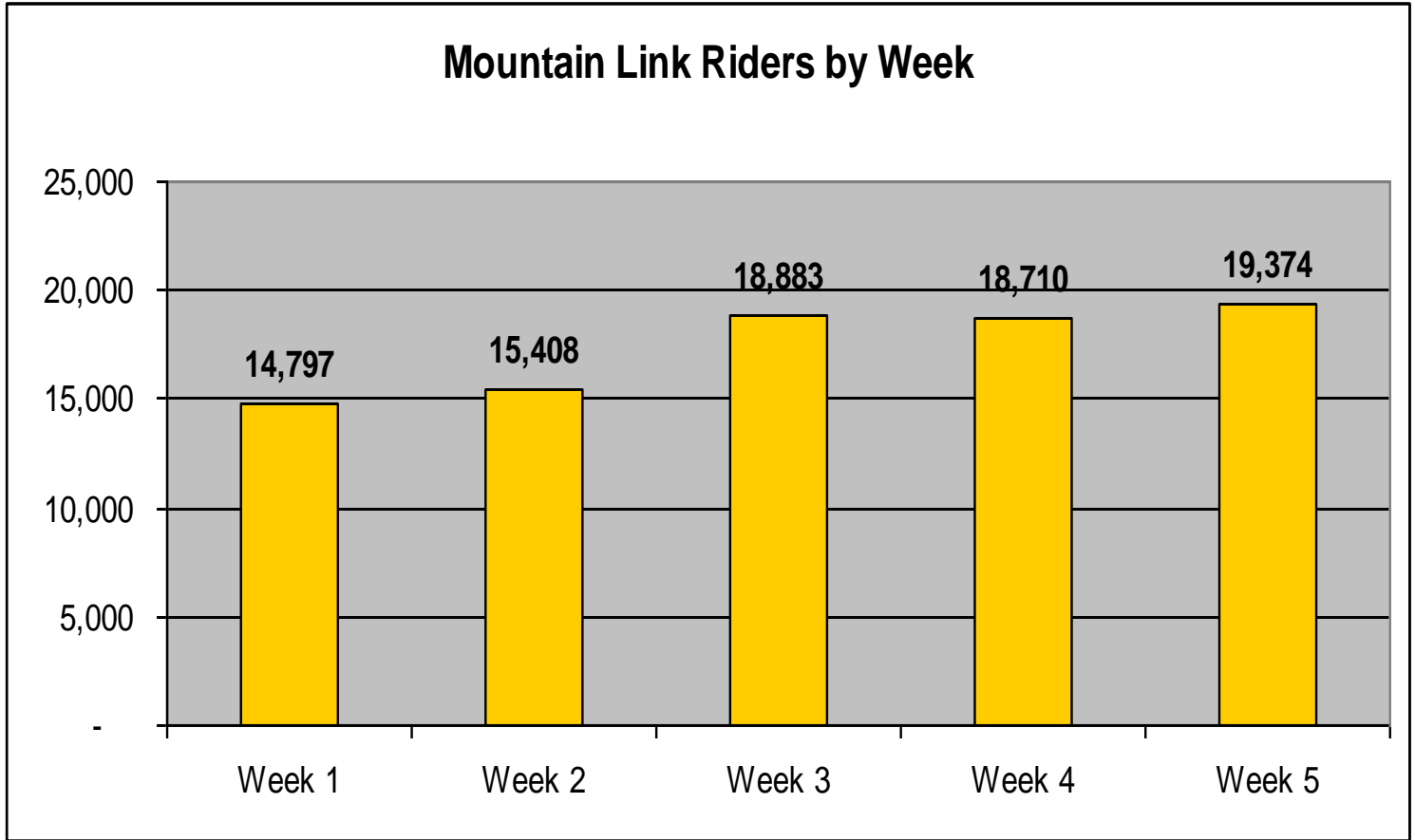
Fair Attendance Shuttle Use



Getting you where you want to go



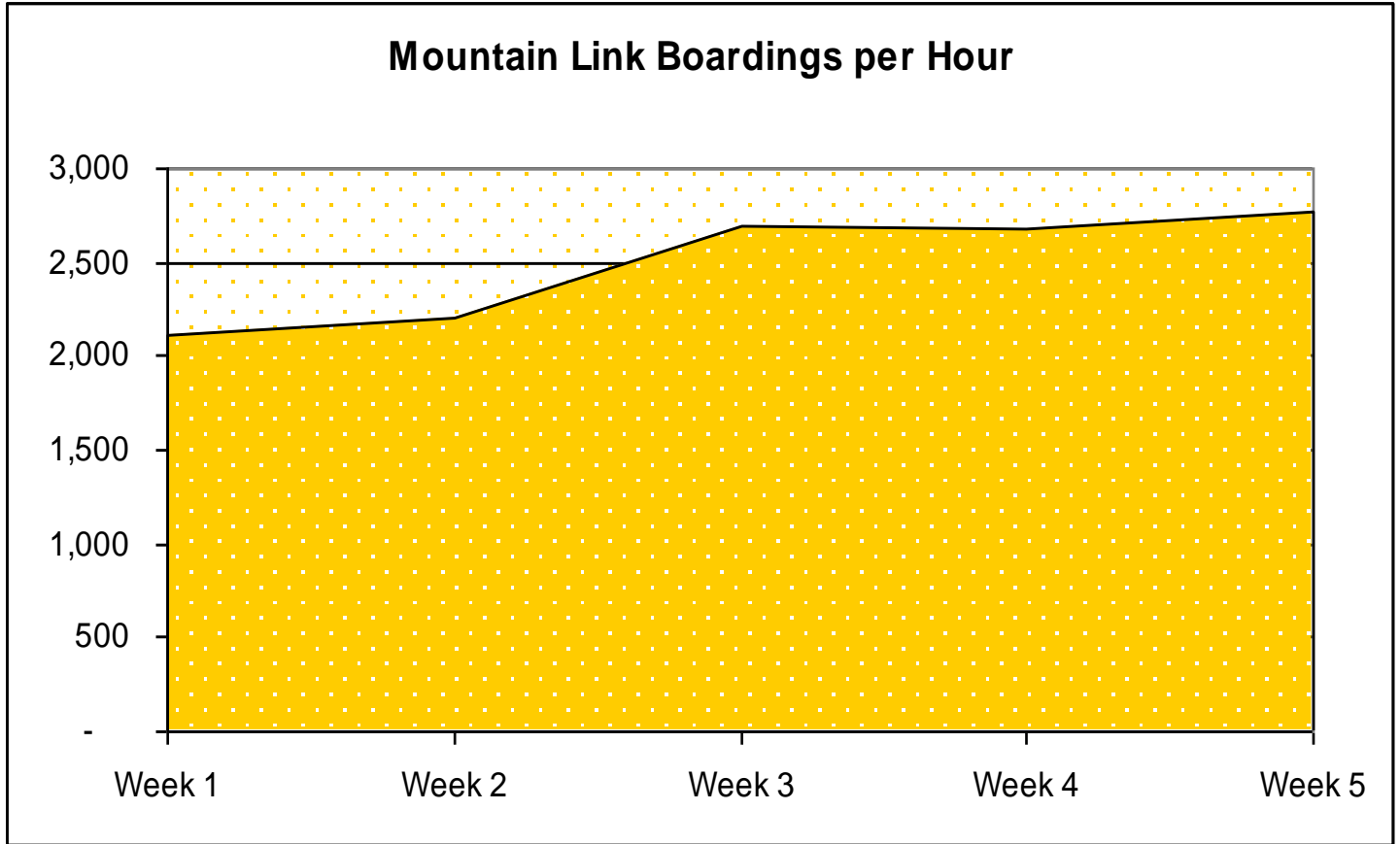
Mountain Link Riders by Week



Getting you where you want to go



Mountain Link Boardings per Hour



Getting you where you want to go

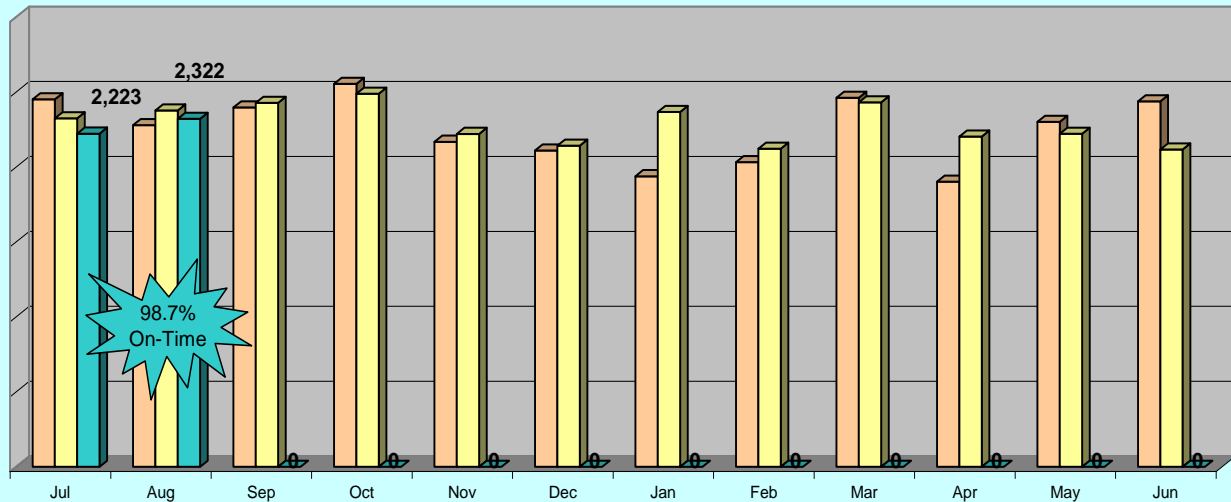


Ridership Trends - August



Ridership Comparison by Month
FY10 to FY12

	Jul	Aug	Sep	Oct	Nov	Dec	Jan	Feb	Mar	Apr	May	Jun
FY 10	2,452	2,279	2,398	2,555	2,169	2,111	1,939	2,033	2,462	1,902	2,301	2,438
FY 11	2,325	2,377	2,428	2,489	2,221	2,143	2,367	2,122	2,432	2,203	2,222	2,117
FY 11	2,223	2,322	0	0	0	0	0	0	0	0	0	0



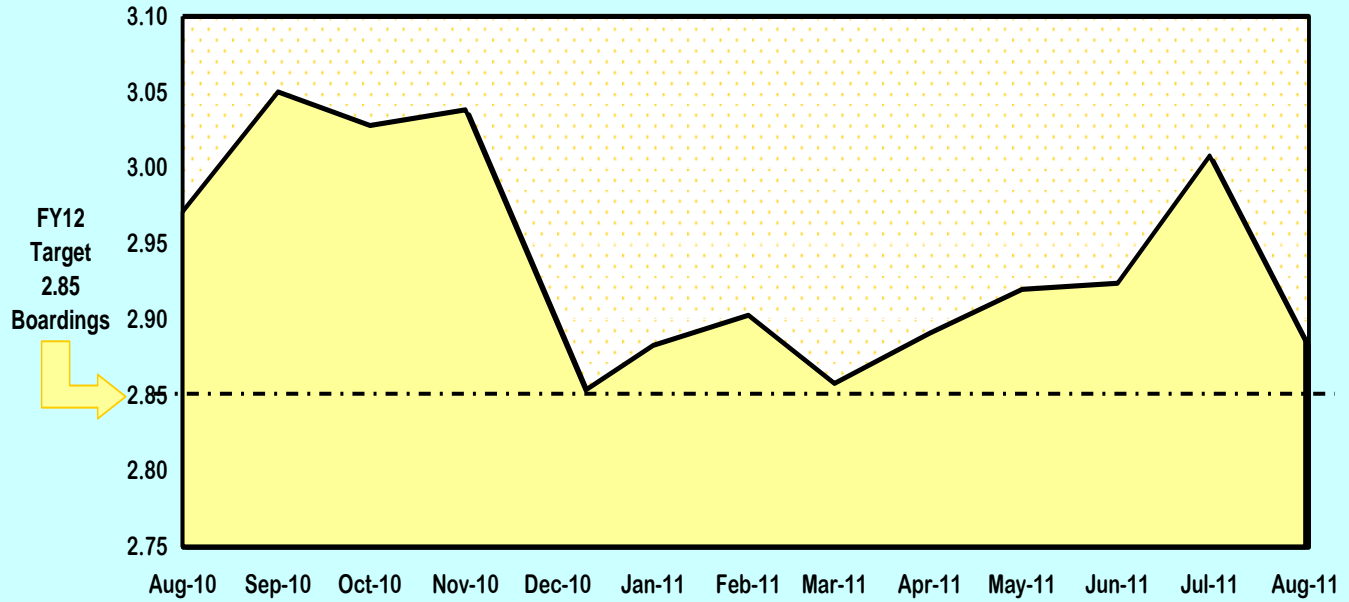
Getting you where you want to go



Ridership Trends - August



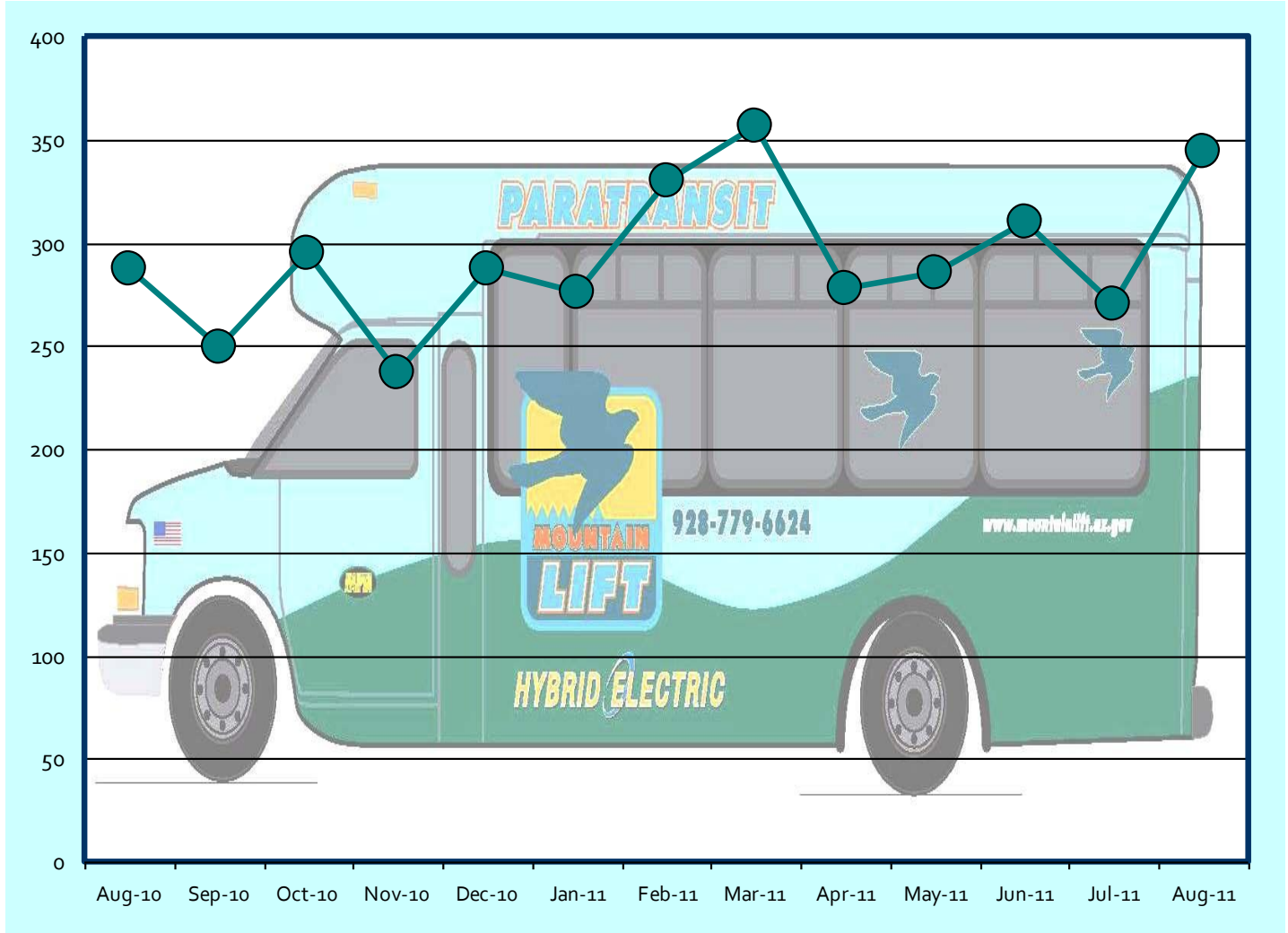
Boardings Per Hour



Getting you where you want to go



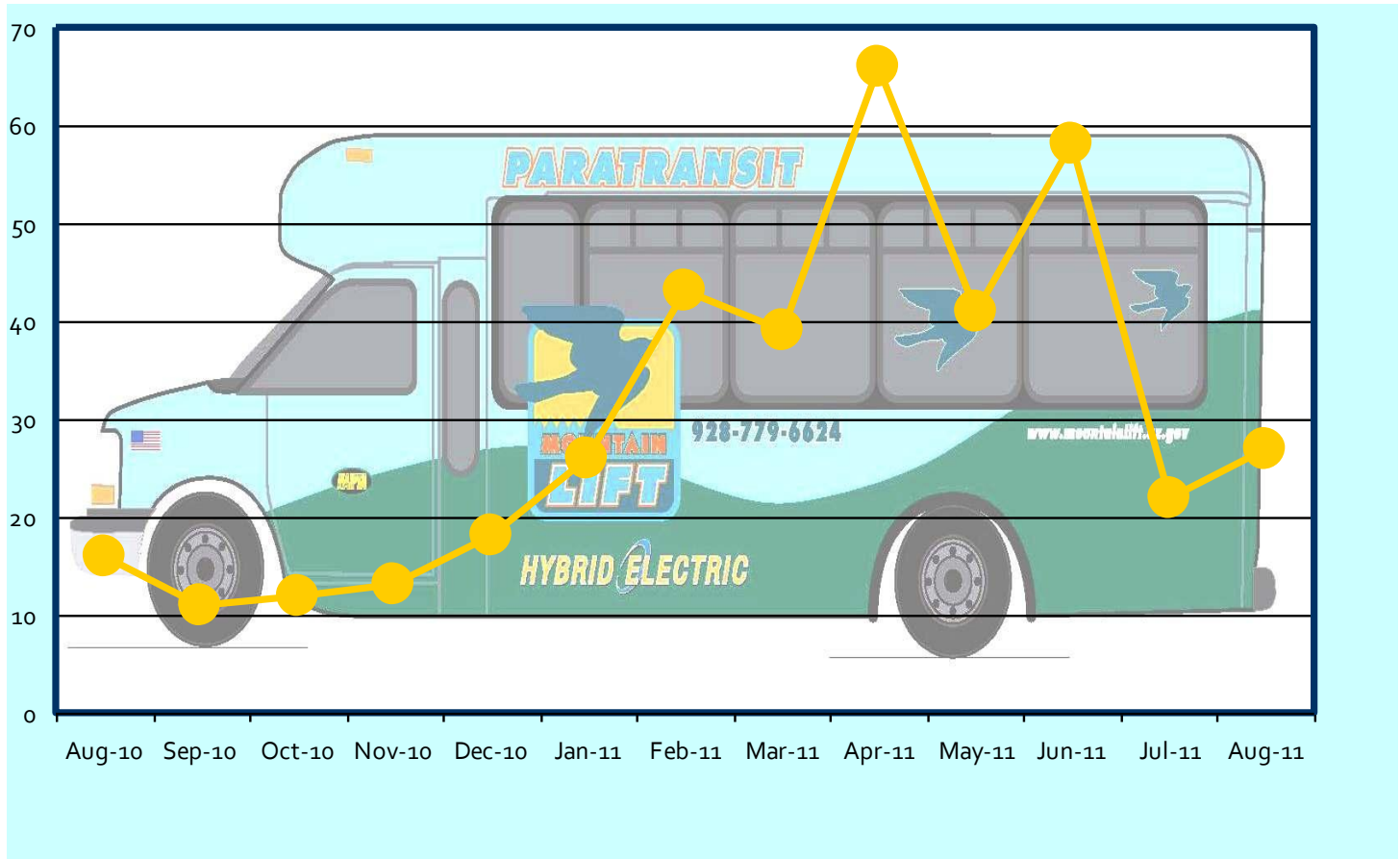
Mountain Lift - City Taxi Voucher



Getting you where you want to go



Mountain Lift – County Taxi Voucher



Getting you where you want to go



Monthly Passenger Totals - August

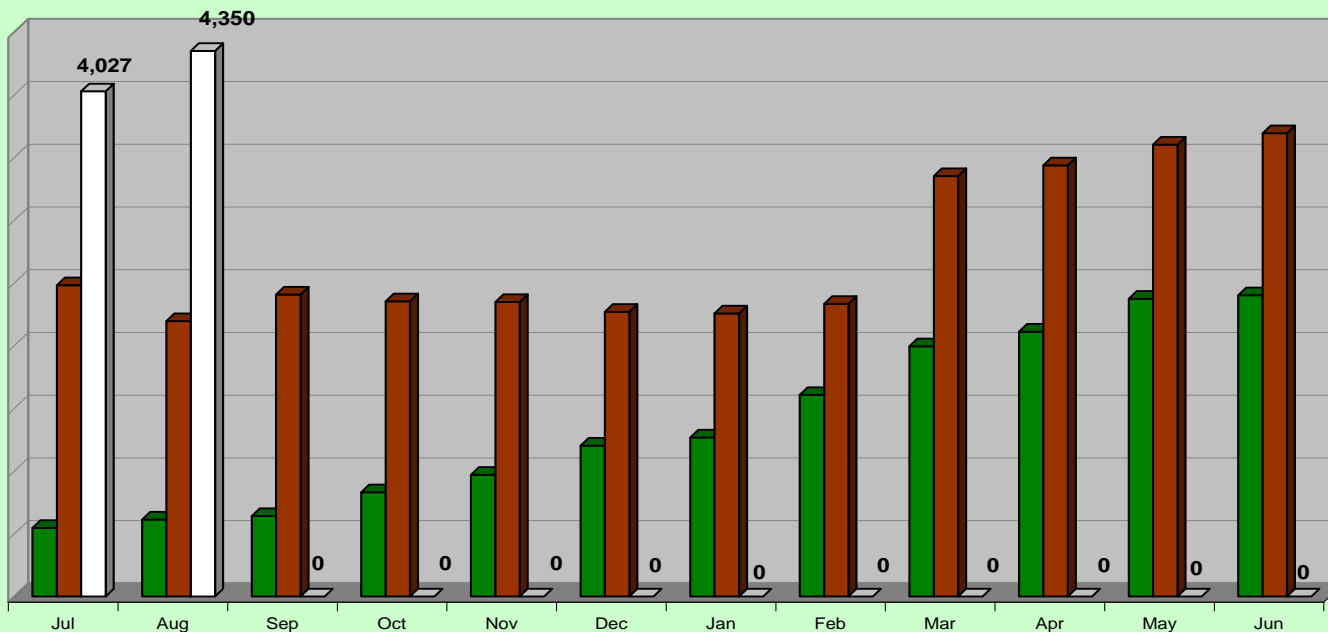


Ridership Comparison by Month FY10 to FY 12

	Jul	Aug	Sep	Oct	Nov	Dec	Jan	Feb	Mar	Apr	May	Jun
FY 10 *	546	614	641	831	970	1,202	1,268	1,607	1,995	2,112	2,373	2,402
FY 11 *	2,481	2,195	2,407	2,354	2,348	2,270	2,257	2,333	3,352	3,437	3,602	3,693
FY 12**	4,027	4,350	0	0	0	0	0	0	0	0	0	0

* service hours were expanded in Nov 2009 - increasing from 2 complete trip/day to 8 complete trips/day

** Sunday service hours were expanded in July 2011 - increasing from 3 complete trips/day to 6 complete trips/day.



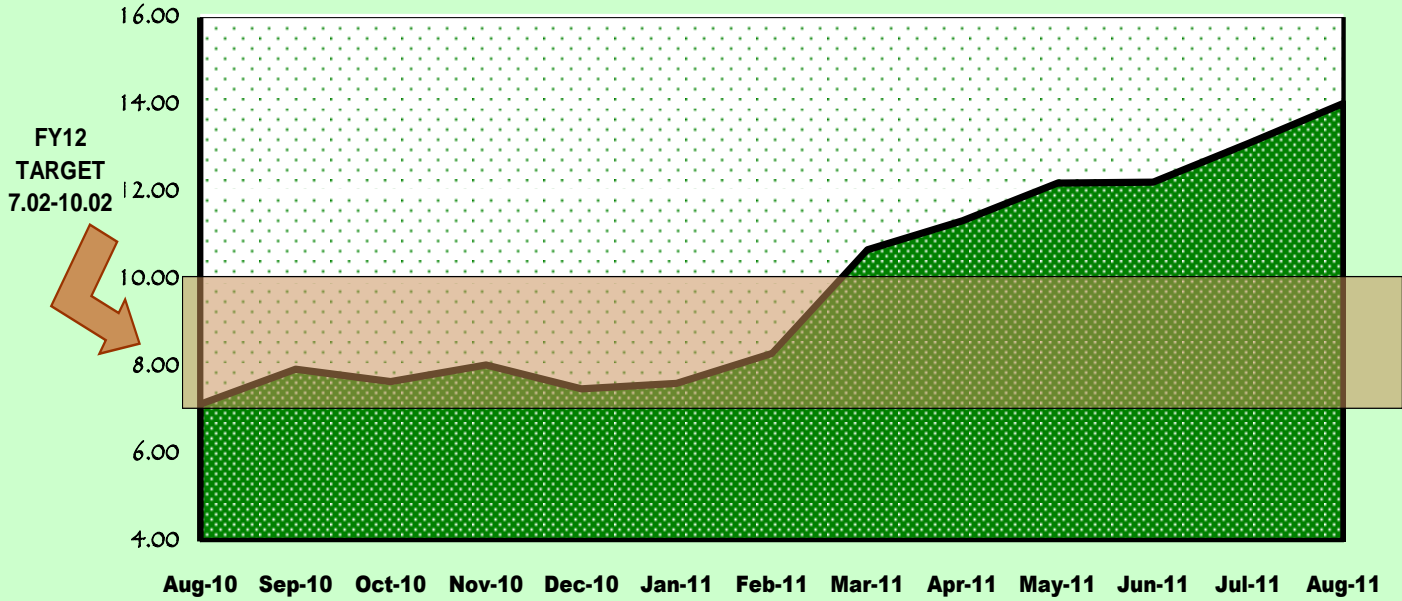
Getting you where you want to go



Monthly Passenger Totals - August



Ridership Per Hour



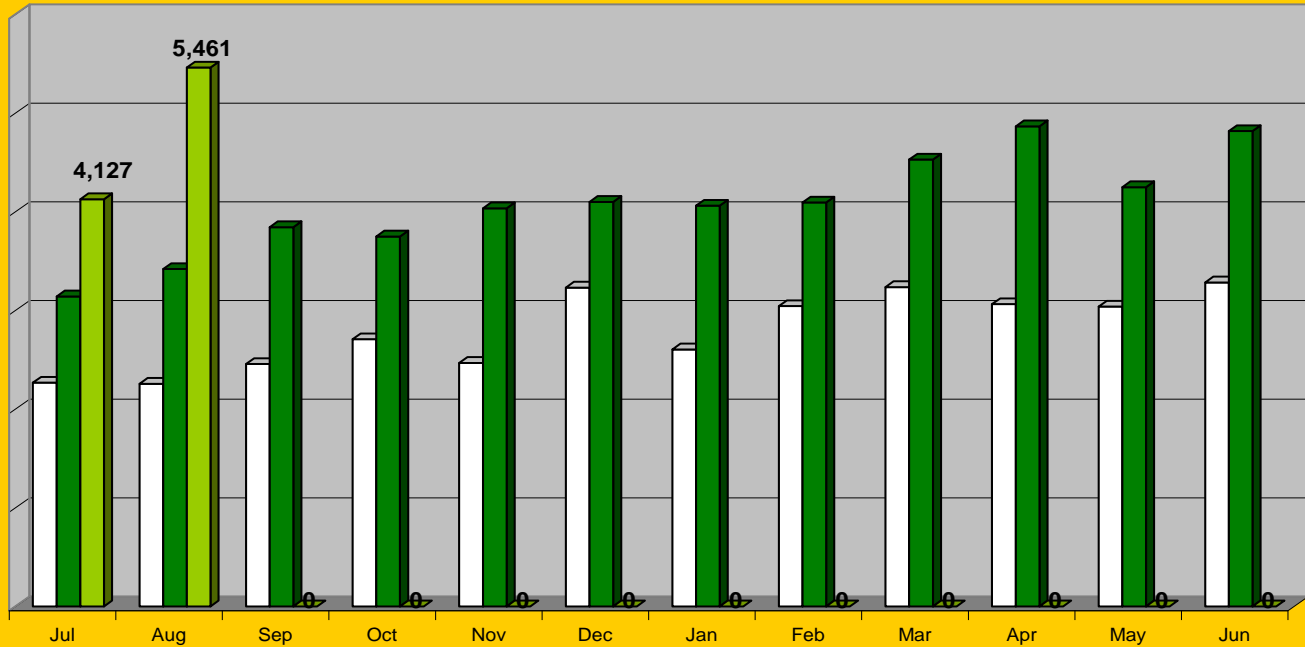
Getting you where you want to go



Fixed Route Monthly Passenger Total - August

Ridership Comparison by Month
FY10 to FY12

	Jul	Aug	Sep	Oct	Nov	Dec	Jan	Feb	Mar	Apr	May	Jun
FY 10	2,267	2,256	2,456	2,708	2,468	3,232	2,604	3,044	3,237	3,063	3,039	3,283
FY 11	3,142	3,419	3,843	3,749	4,035	4,100	4,061	4,093	4,529	4,866	4,249	4,817
FY 12	4,127	5,461	0	0	0	0	0	0	0	0	0	0

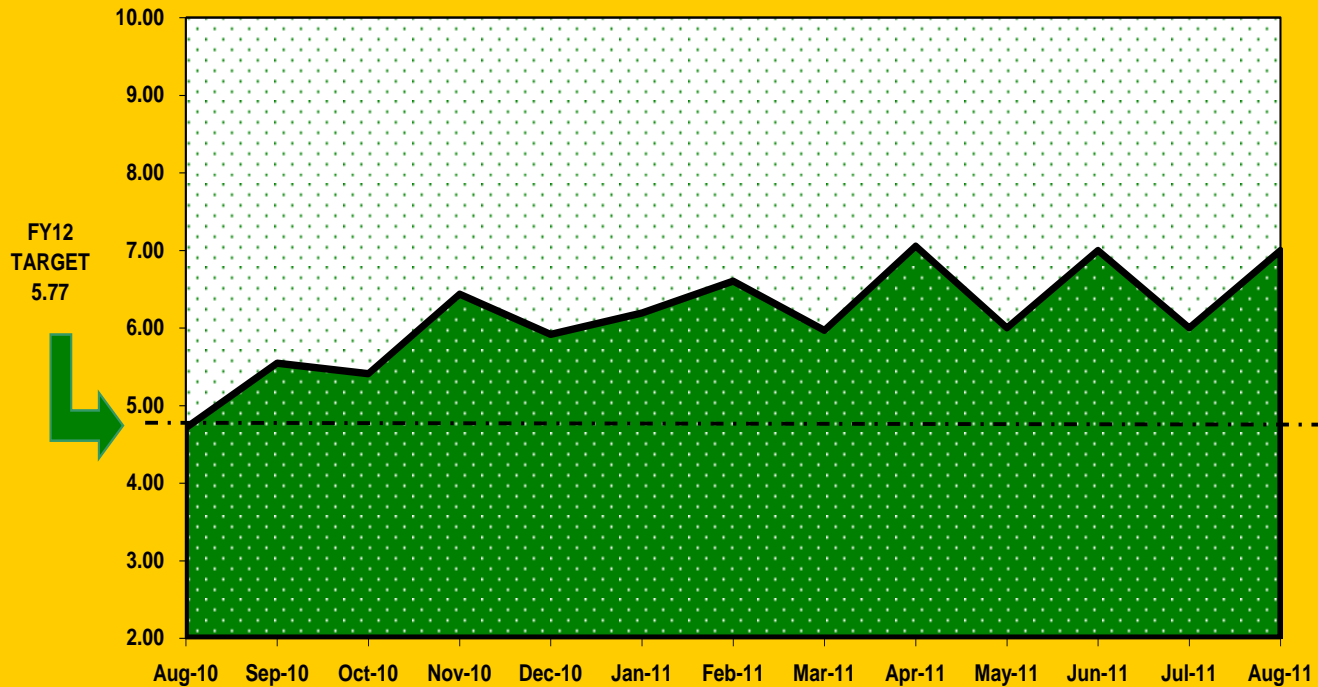


Getting you where you want to go



Fixed Route Monthly Passenger Total - August

Passengers per Hour



Getting you where you want to go

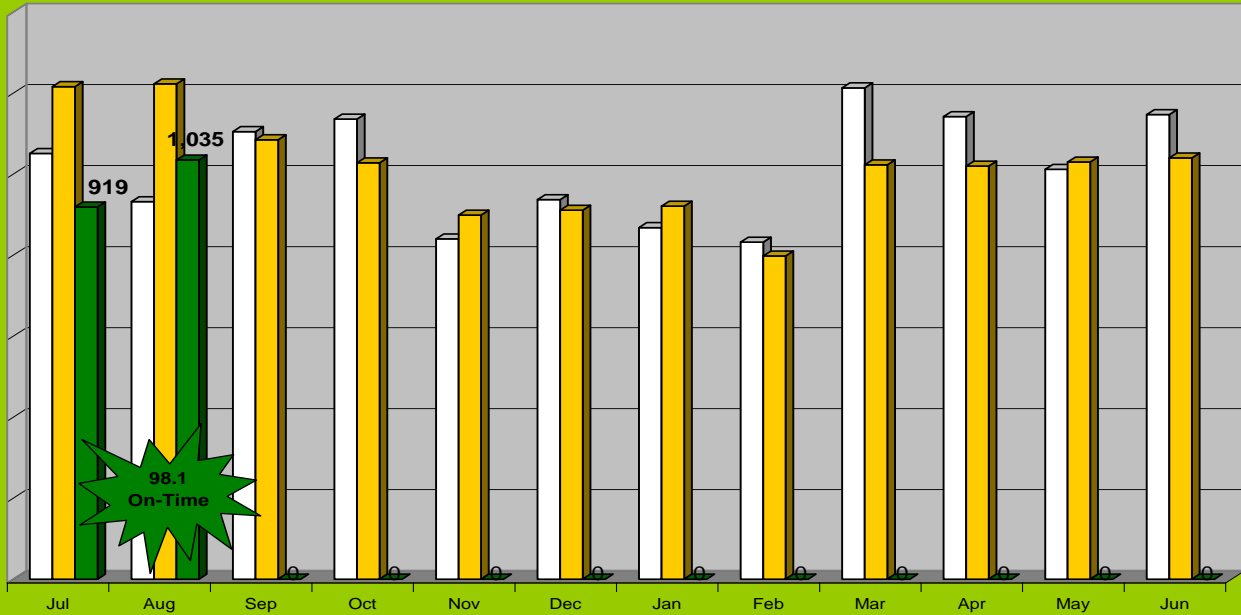


Demand Response Ridership Trends - August



Ridership Comparison by Month
FY09 to FY12

	Jul	Aug	Sep	Oct	Nov	Dec	Jan	Feb	Mar	Apr	May	Jun
FY10	1,051	932	1,105	1,136	840	937	868	832	1,213	1,142	1,012	1,147
FY 11	1,216	1,223	1,085	1,028	899	911	921	798	1,023	1,020	1,030	1,040
FY 12	919	1,035	0	0	0	0	0	0	0	0	0	0



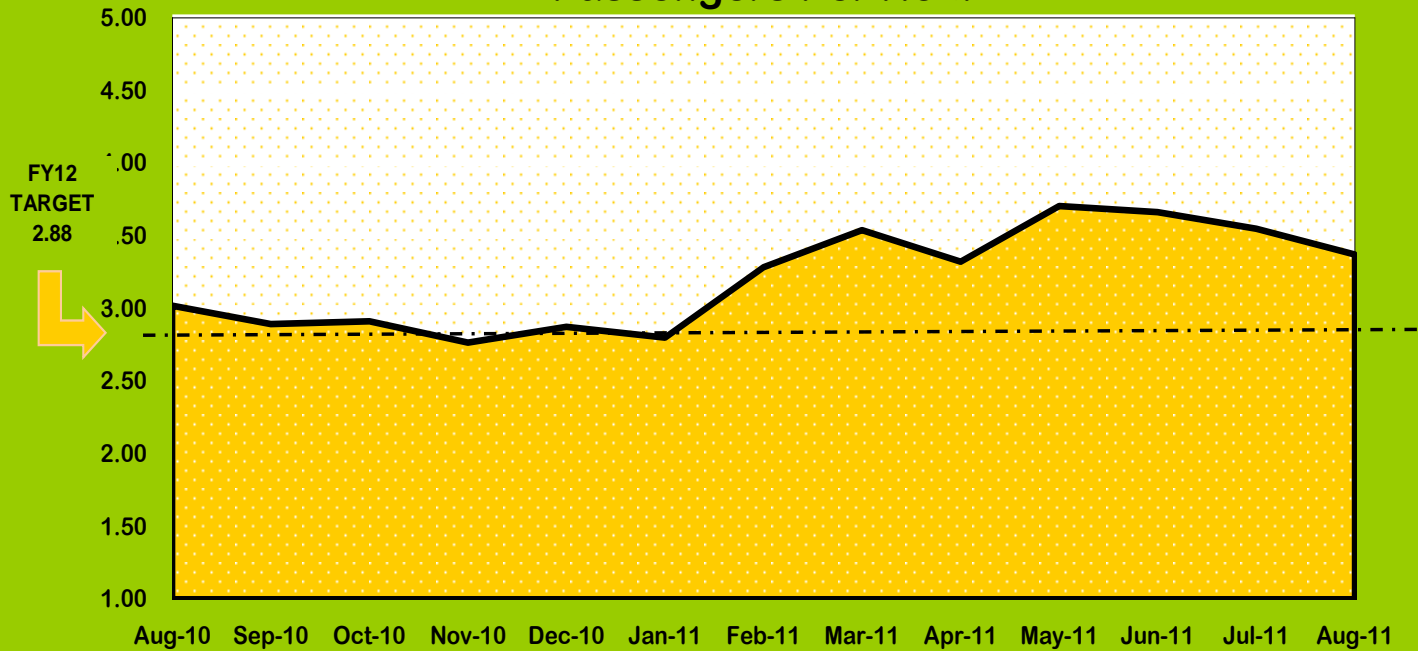
Getting you where you want to go



Demand Response Ridership Trends - August



Passengers Per Hour



Getting you where you want to go